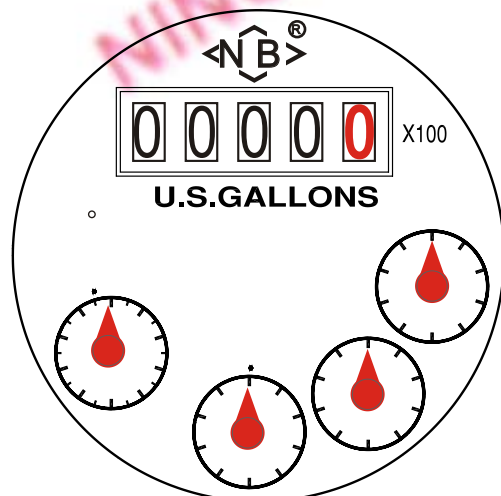
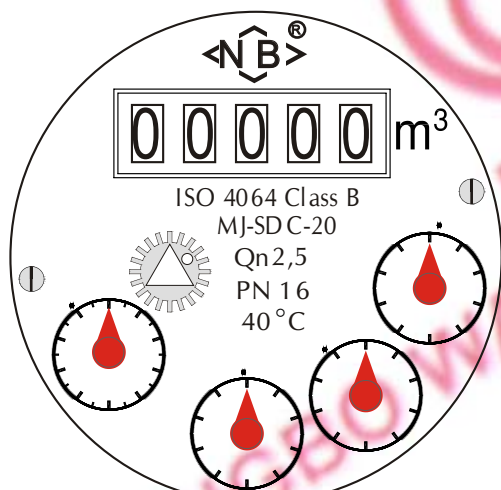


DN15~25 Screw Connection



Dial Plate

DN15~25



MJ-SDC(E)

Multi-jet Dry Type Vane Wheel Water Meter

It is a Multi-jet Super dry water meter for residential application in sizes 15mm and 25mm for cold meter.

Features

- ✦ Dry type, magnetic drive, pointer-roller indicator.
- ✦ Easy and long term clear reading, frost resistance, long working life etc.
- ✦ Available with anti-magnet and remote output system by pulse on request.
- ✦ Plastic meters' body and impact plastic ring.

Standards Compliance

- ✦ ISO 4064 Class B for horizontal Installation
- ✦ AWWA for horizontal Installation for selecting

Optional Features

- ✦ Several lengths and connections available on request
- ✦ U.S.gallon(USG) for selecting
- ✦ Can be equipped with reed switch option

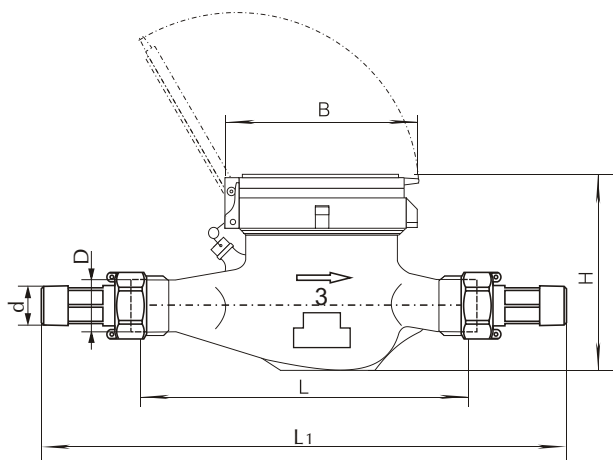
Working Conditions

- ✦ Water temperature: $\leq 40^{\circ}\text{C}$
- ✦ Water pressure: $\leq 1.6\text{ MPa}$

Installation Requirements

- ✦ The meter should be installed in horizontal position with the register face upwards.
- ✦ Pipeline must be flushed before installation.
- ✦ The meter should be constantly full of water during operation.
- ✦ The meter must be installed with the direction of the flow as indicated by the arrow plastic in the meter body.

Dimension Picture



DN15~ DN25

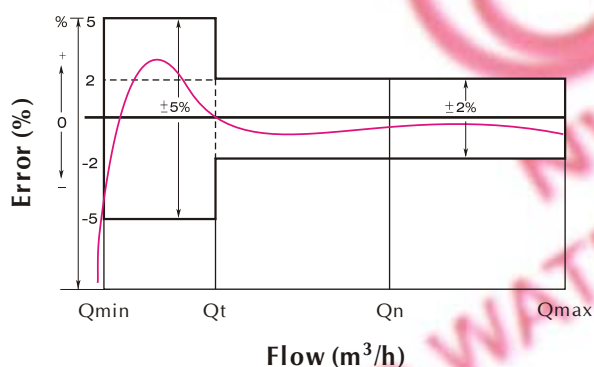
Technical Characteristics

Dimensions and Weights

Nominal diameter	DN	15	20	25	
Body thread	D	G3/4B	G1B	G1 1/4B	
Connector thread	d	R1/2	R3/4	R1	
Body length	mm	L	165	190	260
Overall length	mm	L ₁	259	294	380
Width	mm	B	98	98	98
Meter height	mm	H	105.5	107	107
Weight without connectors	Kg		0.58	0.621	0.7
Weight with connectors	Kg		0.695	0.806	0.99

1. "L₁" is the total length when coupling gaskets without compression.
2. The weight for reference.

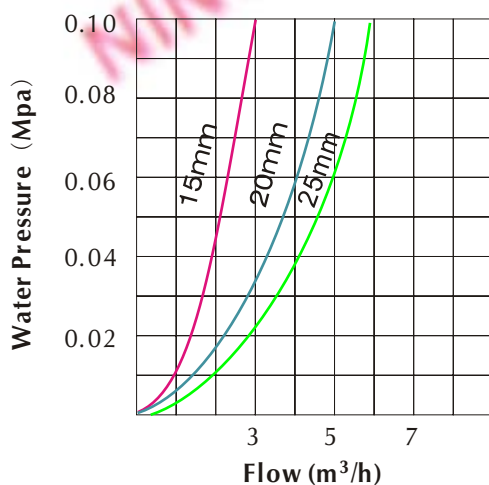
Flow Error Curve



Main Technical Data

Nominal diameter (DN)	Cold water			
	mm	15	20	25
	Inches	1/2"	3/4"	1"
Maximum admissible temperature	°C	40		
Q _{min} ±5%	L/h	30	50	70
Q _t ±2%	L/h	120	200	280
Q _n ±2%	m ³ /h	1.5	2.5	3.5
Q _{max} ±2%	m ³ /h	3	5	7
Pressure loss group at Q _{max}	bar	1		
Maximum admissible pressure	bar	16		
Testing pressure	bar	25		
Indicating range	m ³	99999.99995		
Minimum scale interval	L	0.05		

Pressure Loss Curve



Maximum Permissible Error

- In the lower zone from Q_{min} inclusive up to but excluding Q_t is ±5% .
- In the upper zone from Q_t inclusive up to and including Q_{max} is ±2% .