

LXS-13D₂~32D₂ Single Jet Wet Type Vane Wheel Water Meter



Application

- Measuring the volume of cold potable water passing through the pipeline

Working Conditions

- Water temperature: $\leq 40^{\circ}\text{C}$
- Water pressure: $\leq 1.6\text{MPa}$

Features

- Small, light
- Wet dial with straight reading register working submerged in the water
- Mechanical transmission movement equates to maximum reliability
- Inlet strainer
- The meter is suitable for operation in soft, clean water

Compliance with Standard

- Technical data conforms to ISO 4064 Class B Standard for horizontal installation

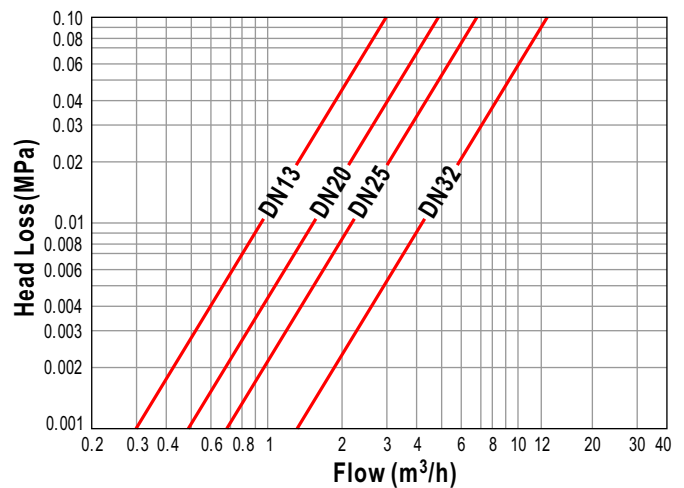
Options

- Meter for hot water up to 90°C is available

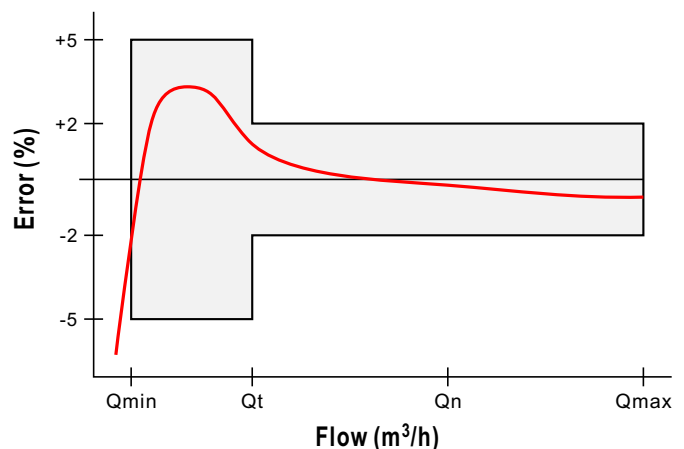
Installation Requirements

- The meter should be installed in horizontal position with the register face upwards
- Pipeline must be flushed before installation
- The meter should be constantly full of water during operation

Head Loss Curve



Accuracy Curve



Ningbo Water Meter CO., Ltd.
No.99, Lane 268, Beihai Road,
Jiangbei District, Ningbo, China
Postcode: 315032

Tel:0086-574-87331095
Fax:0086-574-87376630
<http://www.chinawatermeter.com>
E-mail: wm168@nbnet.com.cn



LXS-13D₂~32D₂-Page 1/2

Main Technical Data

Nominal diameter	DN	13	20	25	32	
Maximum flow rate	m ³ /h	Q _{max}	3.0	5.0	7.0	12.0
Nominal flow rate	m ³ /h	Q _n	1.5	2.5	3.5	6.0
Transition flow rate	l/h	Q _t	120	200	280	480
Minimum flow rate	l/h	Q _{min}	30	50	70	120
Maximum reading	m ³	99999.99995				
Minimum reading	m ³	0.00005				

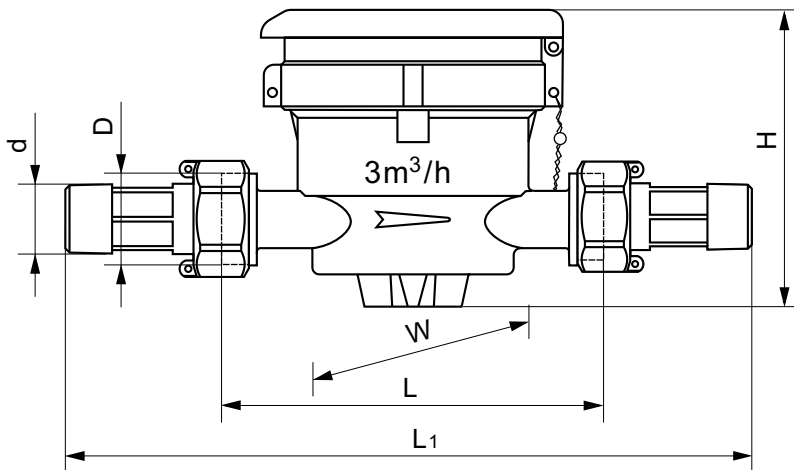
- Maximum Permissible Error:

In the lower zone from Q_{min} inclusive up to but excluding Q_t is $\pm 5\%$.

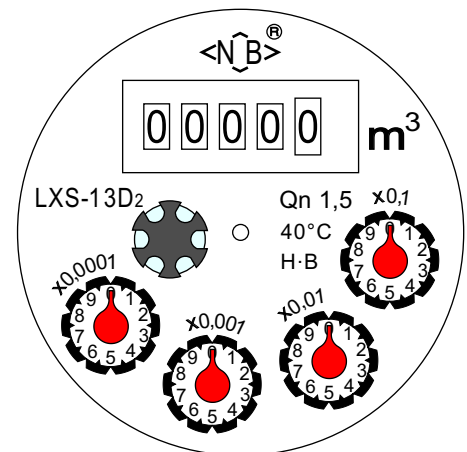
In the upper zone from Q_t inclusive up to and including Q_{max} is $\pm 2\%$ (cold potable water meter).

In the upper zone from Q_t inclusive up to and including Q_{max} is $\pm 3\%$ (hot water meter).

Dimension Picture



Dial



- DN13~DN25: maximum flow rate with m³/h and arrow are indicated on the both sides of the meter body.
- DN32: maximum flow rate and arrow are indicated on the both sides of the meter body.
- The lid can open not more than 120°.

Dimensions and Weights

Nominal diameter	DN	13	20	25	32	
Body thread	D	G3/4B	G1B	G1 $\frac{1}{4}$ B	G1 $\frac{1}{2}$ B	
Connector thread	d	R1/2	R3/4	R1	R1 $\frac{1}{4}$	
Body length	mm	L	110/190	130	160	160
Overall length	mm	L ₁	204/284	234	280	284
Width	mm	W	87	87	87	110
Meter height	mm	H	85.5	85.5	85.5	122
Weight without connectors	Kg		0.72/0.87	0.88	1.13	2.10
Weight with connectors	Kg		0.90/1.05	1.16	1.65	2.90

- "L₁" is the total length when coupling gaskets without compression.